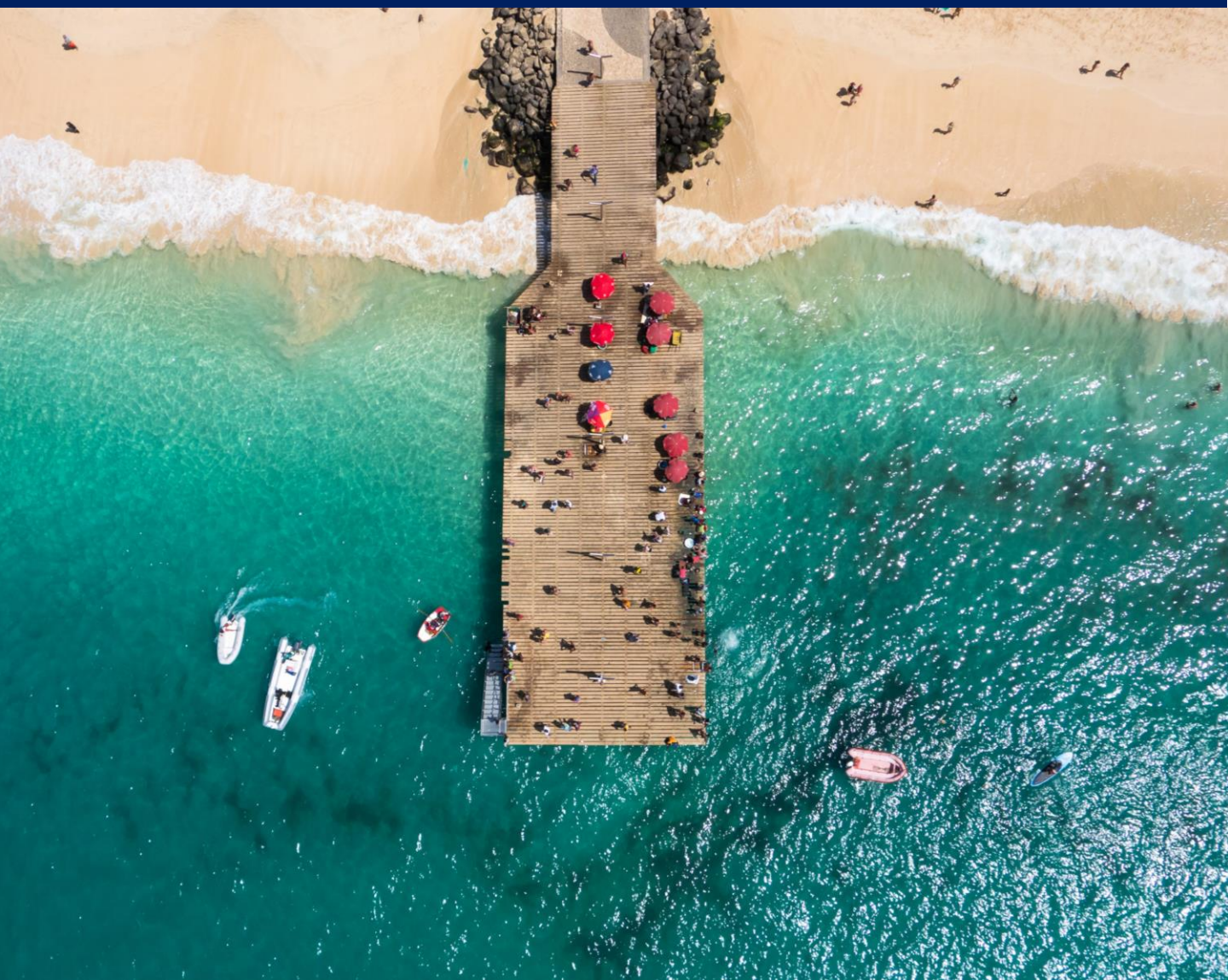


THE CAPE VERDE ARCHIPELAGO 2025/26

- Aboard the 25 cabins M/Y Harmony V.
- Nov - Dec 2025 & Feb 2026
- 8-day cruises from Sal, Palmeira



AT A GLANCE



ISLAND HOPPING CRUISES IN VOLCANIC & VIBRANT LOCALES

A cruise voyage the archipelago of Cape Verde with its welcoming locals and its intoxicating mixture and spellbinding blend of African and Portuguese influences in architecture, food, customs and traditions. Being blessed with a pleasant year-round climate, the archipelago offers a diverse range of landscapes from verdant mountain ranges, lush hills and jungles to explore, to volcanic landscapes or wide deserted beaches.

Highlights include:

Sal - Boa Vista - Praia - Fogo - Sao Vicente - Santo Antao



THE ISLANDS OF THE CAPE VERDE ARCHIPELAGO ON THE M/Y HARMONY V | 2025/26



DAY 1 - PALMEIRA, SAL

Embarkation at 4 pm at the port of Palmeira, Sal. Dinner on board and departure at midnight towards Boavista. Overnight at sea.

DAY 2 - SAL REI, BOA VISTA

Early morning arrival at Sal Rei, Boa Vista. Boavista offers the most beautiful beaches of the archipelago, and amazing landscapes, both on its coasts and in the heart of the island. Relax on the beach or enjoy an all-day optional excursion to discover the most authentic aspects of the island: its villages with colorful facades, its artisans of ceramics, and its agriculture. Lunch at a local restaurant, before we return on board to sail towards Santiago island. Overnight at sea.

DAY 3 - PRAIA, SANTIAGO

Early morning arrival at Praia, Santiago, the largest of the islands of the archipelago. After a morning at leisure and lunch on board, the optional afternoon excursion will bring us to Cidade Velha, the first colonial city built in the tropics and classified by UNESCO. The fort and the nearby settlements were once a thriving slave trade centre. Late in the evening we will sail north towards Fogo, the island of fire. Overnight at sea.

THE ISLANDS OF THE CAPE VERDE ARCHIPELAGO ON THE M/Y HARMONY V | 2025/26



DAY 4 - SAO FELIPE, FOGO

Early morning arrival Fogo, with its dominating sight of the Fogo Volcano which rises 3,000 meters over the sea level. Our optional full day excursion will bring us at the top of the volcano, right at the crater edge. You will walk through a landscape of lava. Lunch will be at the crater's village. We will also visit the city San Felipe with a characteristic colonial charm. Late in the evening we will sail to Sao Vicente. Overnight at sea.



DAY 5 - MINDELO, SAO VICENTE

Once a vibrant commercial island, it has evolved into a cultural center and Mindelo is one of the most well preserved colonial cities in Cape Verde. Our optional walking excursion will allow you to visit galleries and discover busy restaurants, musical events that give Mindelo its label of the Cultural Center of the Cape Verde. It is no surprise that the National Museum of Handicrafts is located in Mindelo. Overnight in port.



DAY 6 - MINDELO, SAO VICENTE – PORTO NOVO – SANTO ANTAO

Early in the morning depart for a short sail towards the island of Santo Antao, the greenest of all Cape Verde Islands with landscapes of verdant plantations of sugarcane alternate old craters. Our optional full day excursion will include the luxuriant Valley Paul where sugarcane is still exploited and where you will taste the "grogue" the national drink of the Archipelago. You will also reach the Valley of Ribeira das Patas and discover rock formations coming from lava formations. Dinner on board and overnight in port.

DAY 7 - PORTO NOVO – SANTO ANTAO

This morning, enjoy an optional half day excursion to discover the south-western part of the island a safari through volcanic landscapes, porcelain field, and isolated villages with dropwise agriculture and different kind of plantations. This is a beautiful experience through villages like Lagedos with an ecological tourism to explore the dry volcanic face of this extraordinary island. Return on board to depart towards Sal. Overnight at sea.

DAY 8 - PALMEIRA, SAL

Early morning arrival at Palmeira port, Sal. Disembarkation at 9:00 am after breakfast.



Itineraries can be changed at the discretion of Variety Cruises and of the Vessel's Captain in case of adverse weather conditions - winds of 6/7 Beaufort or more depending on the vessel- on port authorities not allowing a vessel to leave port or in case of other extraordinary conditions. Such itinerary changes do not automatically entitle passengers to any refunds, but Variety Cruises guarantees that passengers are disembarked at the advertised port of disembarkation on time for their flights.



SAILING DATES

	Value Season	High Season
From Sal to Sal	2025 Nov 29 2025 Dec 06, 13	2025 Nov 22 2025 Dec 20, 27 2026 Feb 25

YOUR BOAT



M/Y HARMONY V

Mega Yacht

GENERAL INFORMATION

Length: 55 m

Launched: 2009 | Renovated: 2017

Cabins: 25

Capacity: 49 passengers

Crew: 16-18

The M/Y HARMONY V is a 183 ½ ft-wide elegant yacht and was rebuilt/launched in July 2009. HARMONY V complies with EUROSOLAS safety regulations, ISPS (International Ships Port Safety Code) ISM, (International Safety Management), while its powerful engines, generators and state of the art stabilizers will allow for safe and comfortable cruising.

Service on board is provided by your Captain, the Cruise Coordinator and your experienced Marine and Hotel crew members. Service will be attentive or unobtrusive according to your requirements and priority is always given to the safety and comfort of passengers. Organized excursions are available for most ports of call and can be pre-booked or reserved 24 hours in advance.



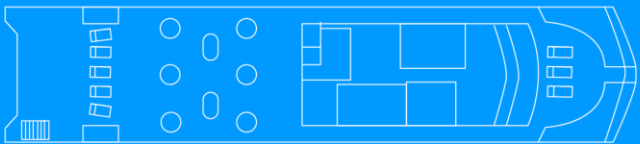
YOUR BOAT



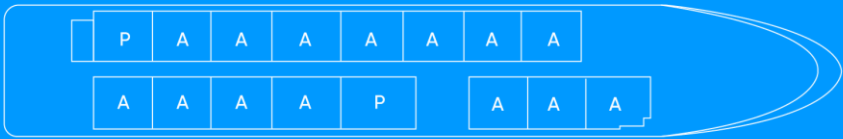
M/Y HARMONY V

Mega Yacht

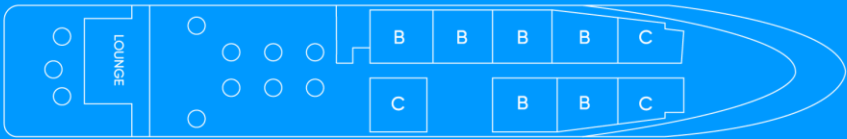
360°
SUN DECK



INFINITY
UPPER DECK



RIVIERA
MAIN DECK



The M/Y HARMONY V is a modern elegant yacht with a sleek high-tech look very similar to the private yachts to be found in the famous ports of the world.

YOUR BOAT



M/Y HARMONY V

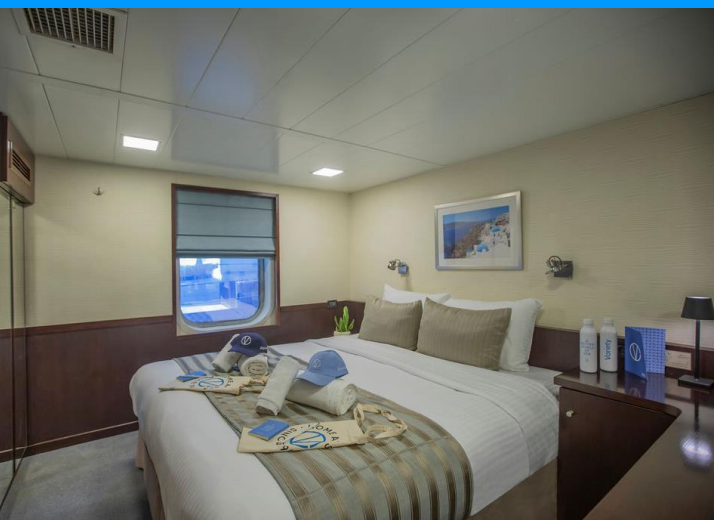
Mega Yacht

CABIN SPECIFICATIONS

The 25 cabins of the M/Y HARMONY V are located on the Main deck (9 cabins) and on the Upper Deck (16 cabins). All cabins are premium and contemporary and are decorated with soft color furnishings. All 16 cabins on the Upper Deck offer flexible bedding configuration, which can be set to offer either two twin beds or a double bed. All cabins offer large windows and ensuite bathrooms with shower and elegant Corian finishing on walls and floors. Each cabin is equipped with flat-screen TV, DVD player, mini-fridge, hairdryer, individually controlled A/C, and safe deposit box.

LIFE ON BOARD

During the day, life on board centers around the Bar Lounge and Dining Room at the Main Deck and meals are also served “al fresco” depending on the weather and the ship location. The Mega Yacht accommodate all guests at one single seating and provide a high standard of cuisine, always with some local flavor. The classy dining room is surrounded by large windows providing beautiful views of the ports of call. The Sun Deck is the ideal place to bask under the sun, read a good book or just gaze at the scenery.



YOUR BOAT



M/Y HARMONY V

Mega Yacht

Main deck lounge & dining room

The classy dining room is surrounded by large windows providing beautiful views of the ports of call. The spacious dining room seats all passengers in a single, unassigned seating and food is served at the table or displayed on the state of the art hot & cold buffet which also includes an “a la minute cooking” section.

Sun deck

Outdoor/Indoor Dining Room & Loungers

Located on the Upper Deck, the outdoor dining area, also convertible into indoor area provides beautiful views of the ports of call visited and meals are served alfresco weather permitted. Sun loungers are available to bask under the sun, read a good book or just gaze at the scenery.

<https://my.thevivestia.com/tour/voyager-harmony>

